

EXCESS WEAR & USE PROTECTION

available through
MAZDA PROTECTION PRODUCTS



FINANCIAL SERVICES



CRAFTED WITH YOU IN MIND





THE MAZDA PROTECTION PRODUCTS EXCESS WEAR & USE PROTECTION PLAN

assists in waiving your responsibility for qualifying excess wear and use charges at lease-end¹, including:

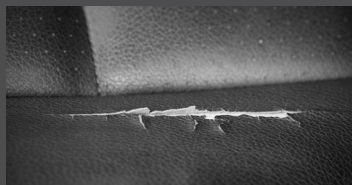
- Each covered single event valued at \$1,000 or less
- Each covered missing part or equipment valued at \$200 or less
- Up to a maximum of **\$5,000** in total excess wear and use charges²



This protection plan is only available when you lease your new or Certified Pre-Owned Mazda vehicle.³ Ask your participating dealer for details today.

COMMON EXAMPLES OF EXCESS WEAR & USE:

Photos are examples only. Covered excess wear and use items must be within plan limits.



Interior cuts, burns, or stains



Damage to tires, rims, or hubcaps



Missing parts or equipment



Broken or scratched windshield, windows, mirrors, or lights



Damaged bumpers, body dents, dings, or scratches

1 Under certain circumstances, Mazda Financial Services lease customers are not charged for excess wear and use damage.

2 Plan does not waive excess mileage.

3 Plan is only available on leases through your Mazda dealer. Please see your Excess Wear & Use Lease Addendum for full details on terms, limitations and exclusions.

EXCESS WEAR & USE PROTECTION

NO CLAIMS TO SUBMIT

NO DEDUCTIBLES TO PAY

NO REIMBURSEMENTS TO REQUEST

This plan simplifies your lease-end experience with a seamless and convenient process.

The purchase of an Excess Wear & Use voluntary protection product is optional, cancelable (subject to specific agreement terms) and not required to obtain credit.

The Mazda Protection Products Excess Wear & Use Protection Plan is not available in all states. See your Mazda dealer for more information.

The information in this brochure is provided as an overview of the Excess Wear & Use Protection Plan. Coverage is subject to exclusions and limitations set forth in the Excess Wear & Use Lease Addendum. The information provided in this brochure is subject to change at any time without notice.

Mazda Financial Services is a registered service mark of Mazda Motor Corporation and licensed to Toyota Motor Credit Corporation ("TMCC"). Retail installment accounts are owned by TMCC. Lease accounts are owned by Toyota Lease Trust. TMCC is the authorized attorney-in-fact and servicer for Toyota Lease Trust. Retail accounts and leases through Mazda Financial Services are subject to credit approval by TMCC. Additional terms and conditions apply. Mazda Protection Products is a registered service mark of Mazda Motor Corporation and licensed to Toyota Motor Insurance Services. Voluntary protection products are owned by Toyota Motor Insurance Services. Mazda Motor Corporation (and its affiliates) and TMCC (and its affiliates) are not affiliated with each other and are each responsible for their respective products. Toyota Motor Credit Corporation (NMLS ID#8027). 00354 • 22-385500-INS (05/21)



FINANCIAL SERVICES